



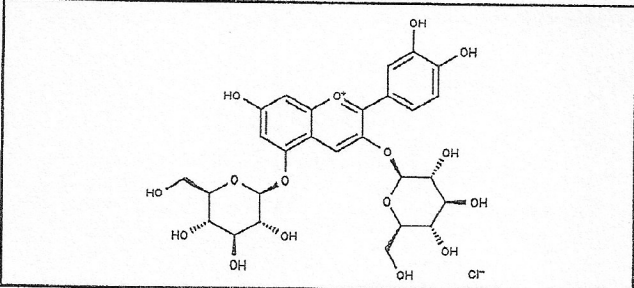
# INDOFINE Chemical Company, Inc.

121 Stryker Lane, Bldg. 30  
Hillsborough, NJ 08844 USA  
Phone: (908) 359-6778; Fax: (908) 359-1179

## Certificate Of Analysis

**020932S**                      **CYANIN CHLORIDE**                      **Lot No.: 24102210**

CAS RN	2611-67-8
MOL FORMULA	C <sub>27</sub> H <sub>31</sub> O <sub>16</sub> Cl
MOL WEIGHT	646,95



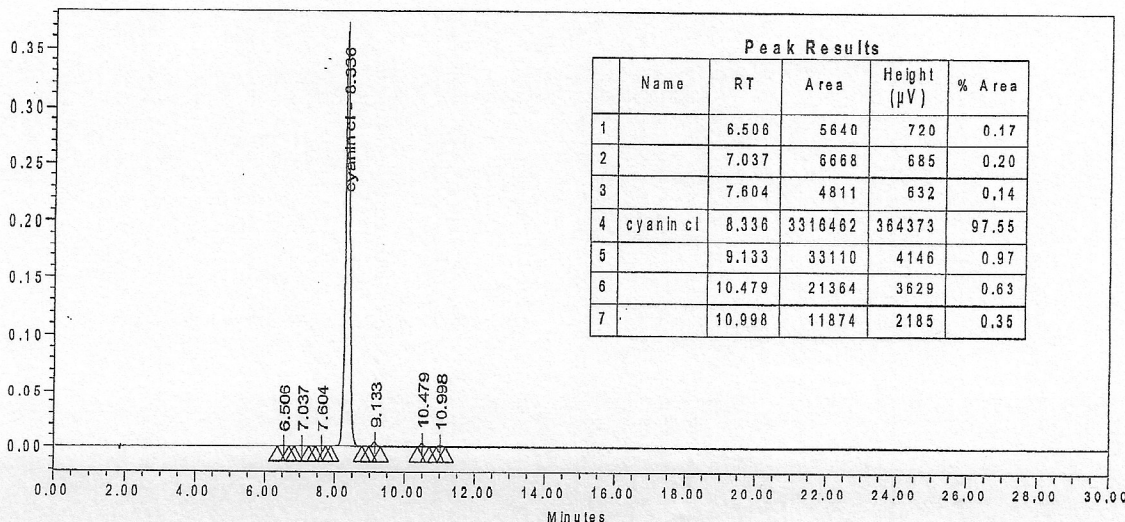
TEST	METHOD	UNIT	SPECIFICATION	RESULT
Appearance	Visual		Dark powder	Conform
Potency	UV		$\epsilon$ (525 nm, MeOH+0,1% HCl) = 43 000 +/- 2000	42330
Water content	KF	% w/w		5,8
Residual solvents	GC-HS	% w/w		0,4
Inorganics	ICP-MS	% w/w		< 0,1
Purity	HPLC	% area	$\geq 97,0$	97,6
Assay	Calculated (*)	% w/w		91,5

(\*) Assay = Purity by HPLC x (100 - %water - %solvents - %inorganics)

### CHROMATOGRAPHIC PURITY / HPLC

Column : Atlantis dC18 - 4,6x150 mm - 3  $\mu$ m  
 Mobile phase : Gradient: B from 5% to 60% in 20 min then 60% to 100% in 5 min then 5 min isocratic 100%  
 A = Water + 10% HCOOH / B = MeOH  
 Detection : UV 515 nm

Temperature : 30°C  
 Flow rate : 1 ml/min  
 Injection volume : 5  $\mu$ l  
 Injection solvent : MeOH + 0,1% HCl



LONG TERM STORAGE : Below -15°C in a dry and dark place